

Material:

Housing: 30% Glass filled PBT UL94V-0.

Contacts: Brass.

Plating: Gold plated over nickel.

Tin plated over nickel.

Selective gold plated: Gold plated on mating area and tin plated on solder tail.

Electrical Characteristics:

Current Rating: 1 AMP.

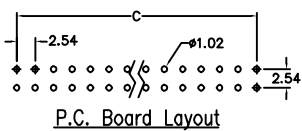
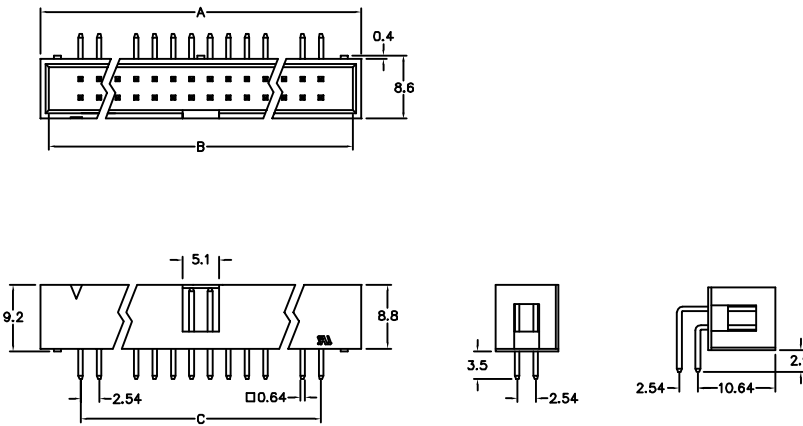
Insulator Resistance: 5000MΩmin. at DC 500V.

Contact Resistance: 20mΩmax. at DC 100mA.

Operating Temperature: -55°C~+105°C.

Features:

- * Fully shrouded provides ultimate reliability.
- * With center polarization.
- * Straight, Right angle and Wire Wrap.



Position	Dimension		
	A	B	C
10	20.34	18.10	10.16
14	25.48	23.18	15.24
16	27.90	25.72	17.78
20	33.05	30.80	22.86
26	40.68	38.42	30.48
34	50.80	48.58	40.64
40	58.46	56.20	48.26
50	71.10	68.90	60.96
60	83.80	81.60	73.66
64	89.10	86.68	78.74

Ordering information

BX02-	64	1	1	B
Series	No. of Pin Count	1: Gold Plated 2: Tin Plated 3: Selective Gold Plated	1: Straight 2: Right Angle	B: Black Y: Grey